

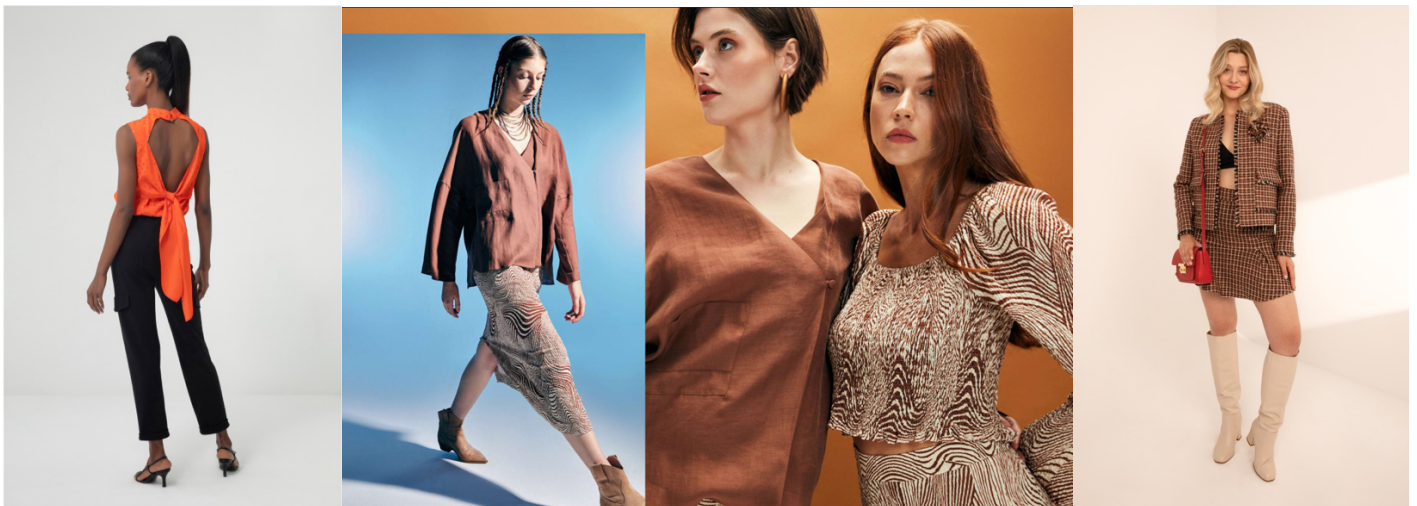
ZENEN TEXTILE



Quality is the core principle we never compromise on.

Our experienced team develops premium collections under the Shendel and Sophene brands, alongside products and services for world-renowned labels.

To optimize efficiency, our export operations are managed independently from production, allowing for faster and smoother customs and import/export.



New Season Catalog: zenentextile.com/shendel

Zenen Textile is the trademark holder of



ZENEN TEXTILE



Zenen's journey began in 1986 under the name Dodan Tekstil. Since establishing our fashion brands Shendel in 1999 and Sophene in 2008, Zenen has strengthened its position in the global textile industry. Today, we proudly export to over 45 countries and continue to be a trusted partner for globally recognized fashion brands.

We are committed to delivering consistent quality, responsible production practices, and long-term partnerships.

The company has a production capacity of 500.000 pieces a year in 6000 square meters factory and management area by handling the entire production process from sourcing fabric to finished garment.

- **Clients**

Zenen is proud to serve leading fashion brands worldwide and has been collaborating with Emporio Armani, Alexander McQueen, The Fold, Jigsaw, LK Bennett, Pinko, Beyond Nine, Ted Baker, eseOese, Luisa Cerano, Yargıcı, Marc Cain, Jones, Sosandar, ME+EM, Han Copenhagen, Baum und Pferdgarten, Ella&Ill, Silk&Cashmere ...

- **Our Mission:**

With a modern vision rooted in ethical values, sustainability, and gender equality, Zenen is dedicated to reshaping the women's apparel industry, creating designs that reflect both style and conscience.

- **Our Products**

We professionalized in women's clothing consisting of dresses, skirts, jackets, coats, pullovers, shirts, blouses, suits, blazers, sweatshirts, trousers, and shorts. Our team develops premium collections of Shendel and Sophene as well as the products and services of world-renowned brands.

- **Quality is Essential**

The most important principle that we never abandon is of high quality. That is the reason why our customers and clients from all over the world still sustain long live business relationships with us. Sophene and Shendel offer a wide variety of collections, supported by powerful colors, special fabrics, and unique accessories, ranging from sophisticated high-end details to easygoing casual wear. Furthermore, Zenen's factory is always open for clients who want to visit and observe the production processes.

- **Sustainability**

We are committed to sustainable growth by aligning our operations with the United Nations Sustainable Development Goals. Our approach prioritizes ethical sourcing, waste reduction, fair labor practices, and environmental protection. We strive to minimize our ecological footprint while delivering quality and innovation. We believe true progress comes from respecting both people and the planet.

PRODUCTION INFORMATION

| | | | |
|-----------------------------------|---|---|--|
| Product Type / Description | Women / Knit 35% | Women / Woven 65% | Current Retail Customers (country) |
| Product currently inline? | <i>TOP, PANTS, SKIRT, CARDIGAN, DRESS</i> | <i>TOP, PANTS, SKIRT, JACKET, COAT, CARDIGAN, DRESS</i> | <i>UK, GERMANY, ITALY, FRANCE, BELGIUM, AUSTRIA, USA, CANADA</i> |

• **Manufacturing**

| | | | |
|--|---|---|---------------------------------|
| Pattern & marker making | Cutting | Main Seams | Embroidery |
| Screen Printing | Knitting | Pressing | Finishing |
| The production capacity of the facility per month | | <i>40.000 (WHEN M.O.Q. IS BETWEEN 500-1500 UNITS PER STYLE)</i> | |
| What are your peak production months? | <i>AUG15-SEPT15, NOV10-DEC10, JAN20-MAR15</i> | When is your low production time? | <i>MAR15-MAY15 SEPT15-NOV10</i> |

• **Employees**

| | | | | | | | | | | |
|--------------------|-----------------------|---|------------------|----|--------------------|---|-----------------|----|--------------------|---|
| Total Staff | Management | 4 | Office | 10 | Design | 5 | Samples | 10 | Engineering | |
| | Incoming Insp. | | Cutting | 10 | Supervisors | | Sewing | 57 | Helpers | 9 |
| | Lab | | Quality | 2 | Embroidery | | Printing | | Laundry | |
| | Repair | 2 | Finishing | 18 | Packing | 6 | Shipping | 3 | Maintenance | 2 |
| | Mechanic | 1 | Knitting | | Linking | | Weaving | | Other | 5 |
| | | | | | | | | | | |

• **Cutting**

| | | | |
|--|---|---|--|
| Is the factory/vendor capable of making patterns and/or markers in-house? | <i>Yes</i> | If yes, what system? | <i>ASSYST</i> |
| Type of cutting? | <i>Computerized with cutter machine</i> | | |
| How do you cut plaids and stripes? | <i>Pinned / blocked / laser</i> | What kinds of markings are used? | <i>Notches / templates / Chalk/drill holes</i> |

• **Sewing, Samples**

| | | | | |
|---------------------------|--|-------------------|---|----------------|
| Production Process | Several sewing operators? | 7 | Number of sewing lines or modules? | 16 |
| Sample Room | Where is the sample room located? | <i>In factory</i> | Where are samples made? | <i>In-line</i> |
| | Lead time on samples? | <i>1-3 days</i> | The number of sample makers? | 10 |

• **Health & Safety**

| | | | | | |
|------------------------------------|-----|--------------------------------------|-----|--------------------|-----|
| How many fire extinguishers | 20 | How many emergency exits | 3 | Fire drills | Yes |
| Is the work area heated? | Yes | Is work area air-conditioned? | Yes | | |

| | | | |
|---------------------------|--|--------------------------------------|--|
| Safety equipments: | <i>Metal Mesh, Leather Gloves, Eye Shield and Eye Protection Unit, Fire ladder, Firefighting Water, Health Care Room, etc.</i> | Health and Safety Activities: | <i>Annual training sessions, Fire drill practice, Risk assessments, First aid training, Sustainability Trainings</i> |
|---------------------------|--|--------------------------------------|--|

• **Fabric Storage, Inspection, and Testing**

| | | | | |
|-------------------------|--|---|---------------------------------------|--------------------------------|
| Storage | Rolls? | Yes | Flat folded? | <i>If needed</i> |
| | Covered with plastic? | Yes | Inboxes? | <i>If needed</i> |
| | On pallets? | Yes | In racks / bins? | <i>If needed</i> |
| Inspection | % rolls / materials inspected in each lot? | 100% | # of inspection lights/tables? | 1 <i>Inspection machine</i> |
| Testing: Outside | If no in-house lab, what testing facility do you use? | <i>If needed, INTERTEK TR or BUREAU VERITAS</i> | Are records available? | Yes |

| | | | |
|--|-----|-----------------------------|--------|
| Is the factory/vendor capable of making patterns and/or markers in-house? | Yes | If yes, what system? | ASSYST |
|--|-----|-----------------------------|--------|

| | | | |
|------------------------------------|----------------------------------|----------------------------------|---|
| Type of cutting? | Computerized with cutter machine | | |
| How do you cut plaids and stripes? | Pinned / blocked / laser | What kinds of markings are used? | Notches / templates / Chalk/drill holes |

- Quality – In-Line Inspection, Final Inspection**

| | | |
|--------------------|---------------------------------|---|
| In-Line Inspection | Number of inline inspectors | 3 |
| Final Inspection | Number of 100% final inspectors | 1 |

Equipment: List of cutting, sewing, laundry, finishing, pressing, embroidery, and color evaluation equipment.

| Equipment Type & Model | Quantity |
|---------------------------------|----------|
| Plain sewing machine | 49 |
| Plain sewing machine with blade | 6 |
| Duble needle sewing machine | 2 |
| Overlock sewing machine | 17 |
| Cover Stitch machine | 4 |
| Rubber Stitch machine | 1 |
| Bartacker | 1 |
| Button sewing machine | 3 |
| Buttonhole machine | 2 |
| Rivet trim machine | 4 |
| Cutting motor | 3 |
| Fabric Cutting Table | 5 |
| Fabric Control Machine | 1 |
| Ironing | 21 |
| Steam Boiler | 5 |
| Carton Cutting Machine | 1 |
| Fabric Cutting Machine | 1 |

Latest Investment:



Our new factory, which is planned to commence operations in early 2026, will cover 4,000 square meters of enclosed space and employ approximately 100 people. This major investment marks a significant milestone in scaling up our production capacity to meet growing global demand.

Designed with sustainability at its core, the facility will be powered in part by solar panels to reduce reliance on conventional energy sources and lower carbon emissions. We are also implementing an advanced waste management.

Contact

Address: Gürsel Mah. Tonoz Sok. No:1 Kağıthane 34400 Istanbul

Tel: +90 212 222 8888

Fax: +90 212 222 0666

E-Mail: info@zenentextile.com

Operation Director: can.koc@zenentextile.com

Web: www.zenentextile.com